

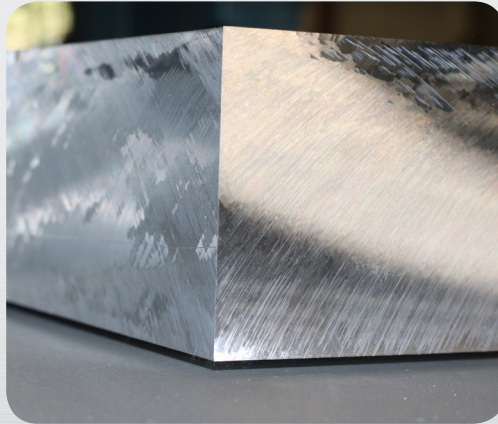
encoremals

SINCE 1892

125 YEARS

WESTERN CANADA'S SOURCE FOR SPECIALTY METALS & PROCESSING

ENCORE'S PLATE SAW IS READY TO SERVICE BRITISH COLUMBIA'S INNOVATIVE MANUFACTURING NEEDS.
SAVE PRODUCTION TIME! WE OFFER 1-2 DAY TURNAROUND ON SPECIFIC SIZES OF PLATE



NOW STOCKING FULL PLATES OF 6061, MIC6, 7075, 2024 IN 48 1/2" X 144 1/2" & 60 1/2" x 144 1/2" AND THICKNESSES:

- | | | | | | |
|--------|--------|------|--------|----|--------|
| 1/4" | 3/8" | 1/2" | 3/4" | 1" | 1 1/4" |
| 1 1/2" | 1 3/4" | 2" | 2 1/4" | 3" | 4" |

STANDARD CUTTING TOLERANCES +0.063" / -0"

NOW STOCKING FIXTURE PLATE: MIC6 & 6061 T651

SIZES: 12 x 14, 14 x 14, 400 x 400 mm, 16 x 20, 500 mm x 500 mm.

Custom sizes available . Non-drilled or punched. Made out of MIC-6 Tooling Plate or 6061 T651

**NACE APPROVED ALLOYS FOR SOUR SERVICE
CUSTOM TREPANNING - CUSTOM SAWING - PLASMA CUTTING**

ALUMINUM BAR,
TUBE, PLATE &
FIXTURE PLATE

ALLOY & CARBON
STEEL BAR

ALLOY & CARBON
STEEL TUBE

BEARING
BRONZE

CAST IRON

CHROME PLATED
ONLY

COLD DRAWN &
HOT FINISHED 4140
TUBE

COLD FINISHED &
PRECISION SHAFT

EB30BAR/ 4330 V
BAR

INDUCTION
HARDENED CHROME
PLATED

STAINLESS STEEL
PLATE, BAR, ANGLES

Request a quote: sales@encoremals.com



encoremals.com

PRINCE GEORGE

1.800.663.8319 PH: 250.563.3343

sales.princegeorge@encoremals.com

VANCOUVER

1.800.940.0439 PH: 604.940.0439

sales.vancouver@encoremals.com

encoremals

SINCE 1892

125 YEARS

ALLOY



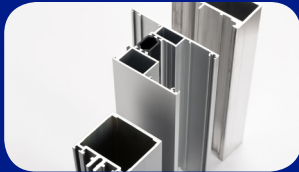
Alloy Steel bars (Hot Rolled) are stocked from 3/8" to 26 1/2" diameter.
GRADES: 3312, 4130, 4140, 4140/4142, 4145, 4150, 4330+V, 4340, 8620, EN30B, E52100
PRECISION GROUND, TURNED GROUND AND POLISHED UP TO 6 15/16" DIAMETER

CARBON



Carbon Steel Bars (Hot Rolled) are stocked from 1" to 24" diameter.
GRADES: 1018, 1018 Cold Finished, 1040-1045, 1045 TG&P, 1045 Chrome Plated Shafting, 1045 Induction Hardened, 1144, A105/A350-LF2 Dual, C12L14, 1215, DOM TUBE, PIPE, MICRO HONED.

ALUMINUM/ ALUMINUM PLATE



GRADES: 2011, 2024, 7075, 6061 T6 , 6063
Round Bar, Flat Bar, Square Bar, Tube, Beam Angle, and custom shapes.
PLATE GRADES: MIC-6 , 6061, 7075.
We can cut to your desired size. Stocking range from .25" thick to 6" thick.

FIXTURE PLATE



SIZES: 12 x 14, 14 x 14, 400 x 400 mm, 16 x 20, 500 mm x 500 mm.
Custom sizes available . Non-drilled or punched.
Made out of MIC-6 Tooling Plate or 6061 T651.

STAINLESS/ STAINLESS PLATE



Bars are stocked from 1/8" diameter to 16" diameter. Plate sizes stocked from 3/16" thick to 4" thick with a maximum width of 60" and we can cut to size or profile cut to your specifications.

GRADES: T-303, T-304, T304H, T-304L, T-310, T-310S, T-316, T-316L, T316N, T-316 PSQ, T-317, T-317L, T-410, T-410S, T-416, T-416PSQ, 17-4PH, 15-5, T-630, 2205 Duplex, Stainless Steel Ornamental Tubing

BRONZE CAST



GRADES: SAE660 Bearing, Aluminum Bronze Alloy 954, 630 Nickel Aluminum Bronze

NICKEL ALLOY



PLATE, BAR, TUBE

GRADES: C276, 400, 500, K500, 600, 625, 718, XM19