

encoremetals

We offer a diverse selection of steel products that meet AISI, ASTM and API requirements, as well as unparalleled customer service, competitive pricing and safety

Encore Metals Edmonton
sales.edmonton@encoremetals.com
780 436 6660

BAR PRODUCTS



Carbon - Rounds, Square, Hex and Flats

Grades - 1018, 1045, 1144, 12L14, 1215, A105/A350 LF2,
Finishes - HR (Hot Roll), CF (Cold Finished) TGP (Turned, Ground & Polished)

Chrome Plated (Imperial and Metric)

Finishes - Chrome Plated (CPO) and Induction Hardened (IHCP) / *.0005 - .001*

Alloy - Rounds

Grades - 3312, 4130 NACE, 4140, 4145M, 4150, 4330V, 4340, 8620, 8630, EN30B

Stainless Steel - Rounds

Grades - T-303, T-304/304L, T-310, T-316/316L (PSQ)
T-317, T-410, T-416 PSQ, 17-4PH DH 1150
T-630, 2205 Duplex, XM-19, Nitronic 50 HS, 9CR, 13CR

Aluminum

Grades - 6061-T6, 2024, 7075-T6, 2011-T3

Bronze Cast

Grades - SAE 660 Bearing Bronze, Aluminum Bronze
Alloy C954

Continuous Cast Iron (Ductile / Grey Cast)

Grades - 65-45-12, G2, 80-55-06, 100-70-02

Tool Steels

Grade - D2, O1, S7, H13

Nickel Alloys

Grade - 625, 718, 400, K500, C276

TUBE PRODUCTS



Carbon

Grades - 1026 DOM (Drawn Over Mandrel), C.D.S.M. (Cold Drawn Seamless), H.F.S.M. (Hot Finished Seamless), Fluid Line (Seamless ASTM A-179/SAE J-524b) & (Welded SAE J-525b), Honed Tubing (ASTM A-513 / A-519) Imperial and Metric sizes, Drive Line Tubing.

Alloy

Grades - 4130, 4140, P110 & L80, ASTM A-519

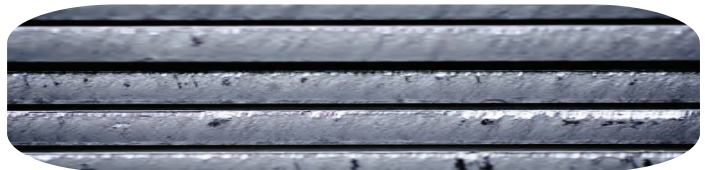
Stainless Steel

Grades - 304/304L, 316/316L, Welded, CD Seamless, HF Seamless

Aluminum

Grades - 6061-T6, 6063- T3, T5, T8

PLATE PRODUCTS



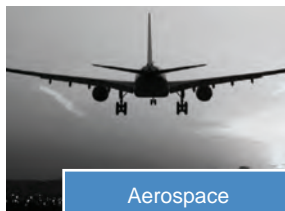
Grades - A36, 1045, A516-Gr70, 4140, 4340 Ann, 6061-T6, 304, 316 - 1" to 7" thick



encoremals

A TRUSTED NAME IN STEEL FOR OVER 125 YEARS

INDUSTRIES WE SERVE



Aerospace



Agriculture



Construction



Forestry



High Tech & Electrical



Manufacturing



Mining



Oil & Gas

SERVICES WE OFFER



Saw Cutting



Plasma Arc Cutting

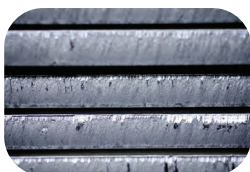


Plate Saw



Packaging



Delivery Services

Trepanning: 1" ID to 7" ID, up to 22' long
Our extensive range of automated Trepan Machines can accommodate round 2" to 32" in diameter.

We have the expertise to drill multiple grades of steel, aluminum and cast to produce high quality hole finishes.



CONTACT US TODAY TO HELP WITH YOUR MATERIAL REQUIREMENTS!

Website - www.encoremals.com

Email - sales.edmonton@encoremals.com

EDMONTON:

Phone: (780) 436-6660

Toll Free: (800) 661-5621

VANCOUVER:

Phone: (604) 940-0439

Toll Free: (800) 940-0439

WINNIPEG:

Phone: (204) 663-1450

Toll Free: (800) 665-9835

CALGARY:

Phone: (403) 236-1418

Toll Free: (800) 661-4140