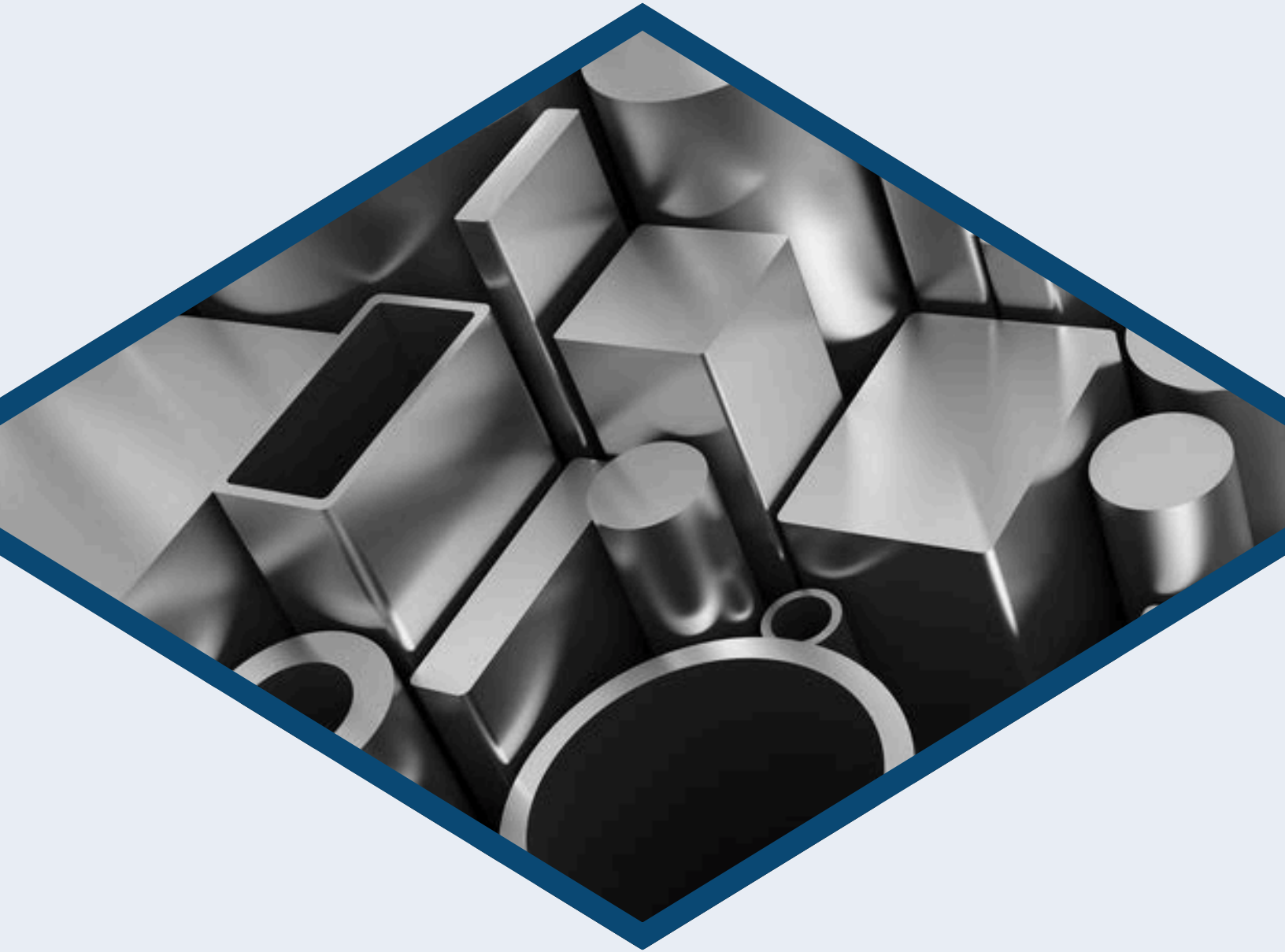


# encoremals

Engineered Materials for Machine  
Shops and Manufacturing



 7470 Vantage Way Tilbury Industrial Park  
Delta, British Columbia V4G 1H1.

 (604) 940-0439

 [sales.vancouver@encoremals.com](mailto:sales.vancouver@encoremals.com)

Visit our Website:



# Our Materials

## Alloy Steel



### Full Line Supplier of Alloy Steel SBQ Bar / Tube Products

Stocked from 3/8" to 26.5" diameter.

Grades: 4140, 4320, 4340, 8620, 9310 in stock.

4130, 4145, 4330, 4150, E52100 available with a short lead time

Hot rolled, Cold finished, Forged, Peeled and Turned ground and polished.

Available in round, flat, square, tube and plate.

## Aluminum



### Largest Full Line Supplier of Aluminum Bar, Tube and Plate Products in Western Canada

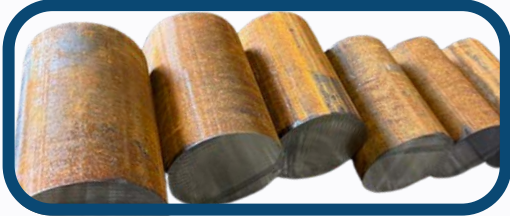
Plate stocked from .25" thick to 6" thick.

Grades: 6061 T6, 7075 T6, 2024 T6, 2011 T3.

Can custom source profiles and shapes to order.

Available in round, flat, square, tube, custom shapes and plate.

## Carbon Steel



### Full Line Supplier of Carbon Steel SQB Bar / Tube Products

Stocked from 1" to 26.5" diameter.

Grades 1018, 1026, 1045, 12L14 CPO and IHCP in stock.

Grades A36, 1008/10, 1117, 11L17, 1144 (stressproof), 1050, 1215,

Hot rolled, Cold finished, Forged, Peeled and Precision Shafting.

Available in round, flat, square, tube and plate.

## Stainless Steel



### Full Line Supplier of Stainless Steel Bar Products

Plate stocked from 3/16" thick to 4" thick.

Bar stocked from 1/8" diameter to 16" diameter.

Grades 303, 304, 316, 416, 17-4 in stock.

Grades 301, 310, 321, 347, 410, 420, 440C, 15-5 available with a short lead time.

## Other Materials



### We Will Source Anything

Nickel (C276, A286, Monel, Hastalloy, Inconel), Titanium (grade 2 CP, grade 5 6AL4V), Brass, Bronze, Copper, Plastic (Acetyl, Delrin, Micarta (including G10) PEEK, UHMW, Teflon PTFE, Torlon, Ultem)

# Cutting Capabilities



## PLATE SAW

Our advanced plate saw is designed for precision cuts with minimal material waste. Capable of handling a wide range of metal plate sizes and thicknesses, it ensures optimal efficiency for your projects.

**250" .375" .500" .625" .750" 1" 1.25" 1.5" 1.75"  
2" 2.25" 2.5" 2.75" 3" 3.5" 4" 5" 6" in stock.**

**Tolerance standard  $\pm .032$ " but can push to  $\pm .005$ " upon request**



**Browse Our  
Product  
Manual**

## Our Promise

At Encore Metals, we understand that every minute counts in your production process. That's why we specialize in delivering high-speed, **next-day service** to keep your operations running smoothly and efficiently. By partnering with us, you can reduce downtime, increase spindle hours, and ultimately improve your productivity. Our extensive inventory of top-quality metals is backed by a commitment to rapid, reliable delivery. Whether you're managing high-demand projects or looking to streamline your supply chain, Encore Metals provides the materials you need—when you need them.

# TSUNE HIGH SPEED COLD SAW

Our Tsune high-speed cold saw cuts diameters from 2" to 8" with a standard tolerance of +/- .030" and up to +/- .005" for high-precision needs, ensuring clean, consistent results.



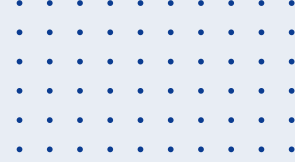
# BAND SAW CUTTING

Our various band saws can handle diameters from 0.5" to 21", providing accurate cuts for a wide range of material sizes. This flexibility ensures efficiency and precision in every project. Please Inquire for tolerances.

# EXTERNAL PROCESSING

We offer external processing services, including precision waterjet cutting, as well as the production of custom circles and rings, to meet your specific project requirements.





## TREPANNING

---

Our specialized drilling services include gun drilling, ejector drilling, and trepanning, providing precise holes from .1875" up to 7" ID. We also offer step drilling for advanced applications, delivering accuracy and reliability for even the most complex requirements.



## PACKAGING

---

We provide tailored packaging solutions designed to meet your unique requirements, ensuring secure and efficient delivery every time. Our packaging prioritizes safety for unloading and transportation, minimizing risks and protecting your materials at every step.

When it comes to DOM tubing, we've got you covered with a full range of sizes from .250" OD to a massive 30" OD—count on us for every project's needs.

# encoremals

## ABOUT US

---

Encore Metals has been supplying specialty steels to Western Canada and the United States since 1892. Our lineage can be traced back to strong affiliations with British and European steel makers.

We are a specialist supplier of high grade steel and metal, including carbon and alloy machinery steels, an extensive range of stainless steels, including duplex grades, nickel alloys, iron bar, aluminum and bronze.



Our warehouses are designed with efficiency and safety in mind. Equipped with numerous overhead cranes, they offer ample space to handle and maneuver heavy materials with ease.

We prioritize the safe unloading and loading of trucks, whether in outdoor conditions or confined spaces, reducing the risk of accidents and improving workplace safety. These measures help to ensure smooth operations, protect your employees, and minimize WCB claims.